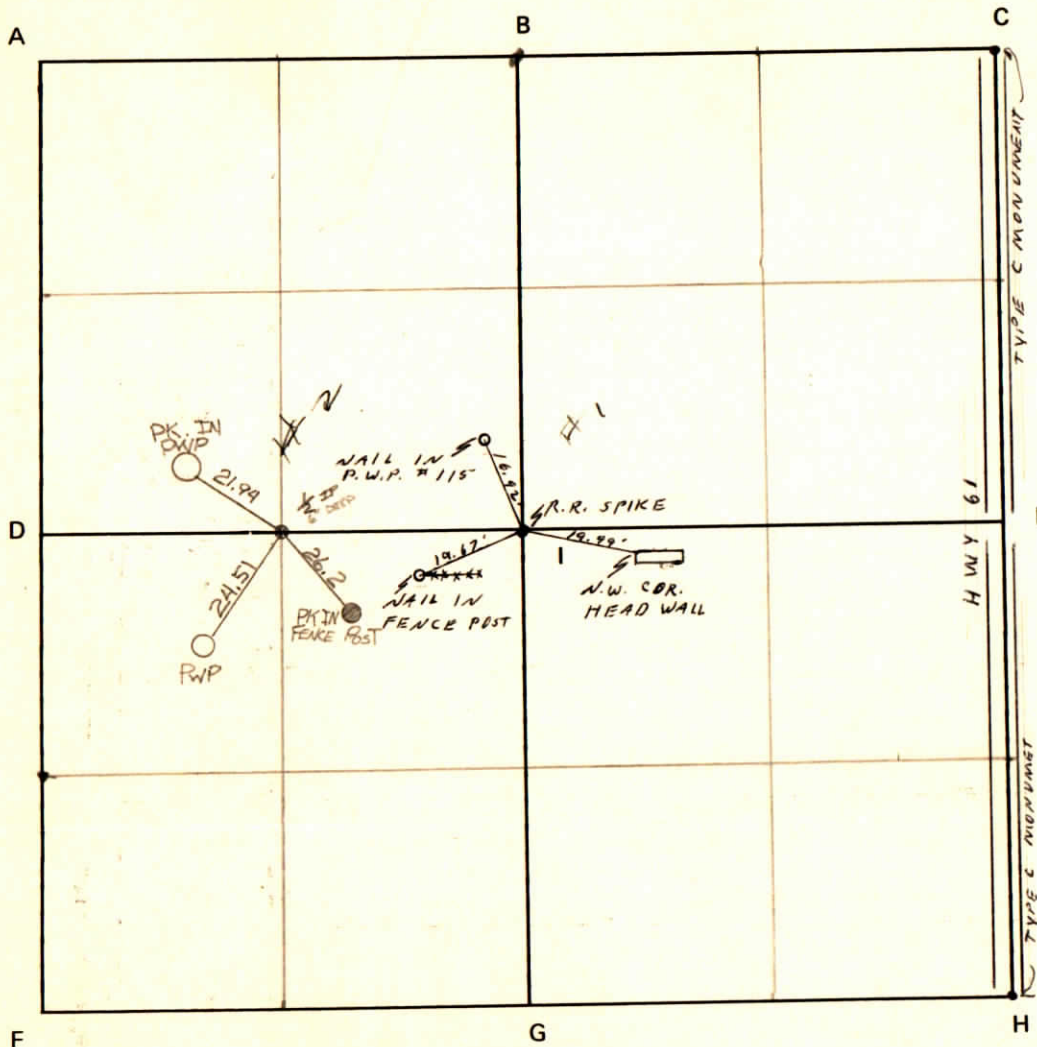


### CORNER CODE SYSTEM Warrick County



### NOTES

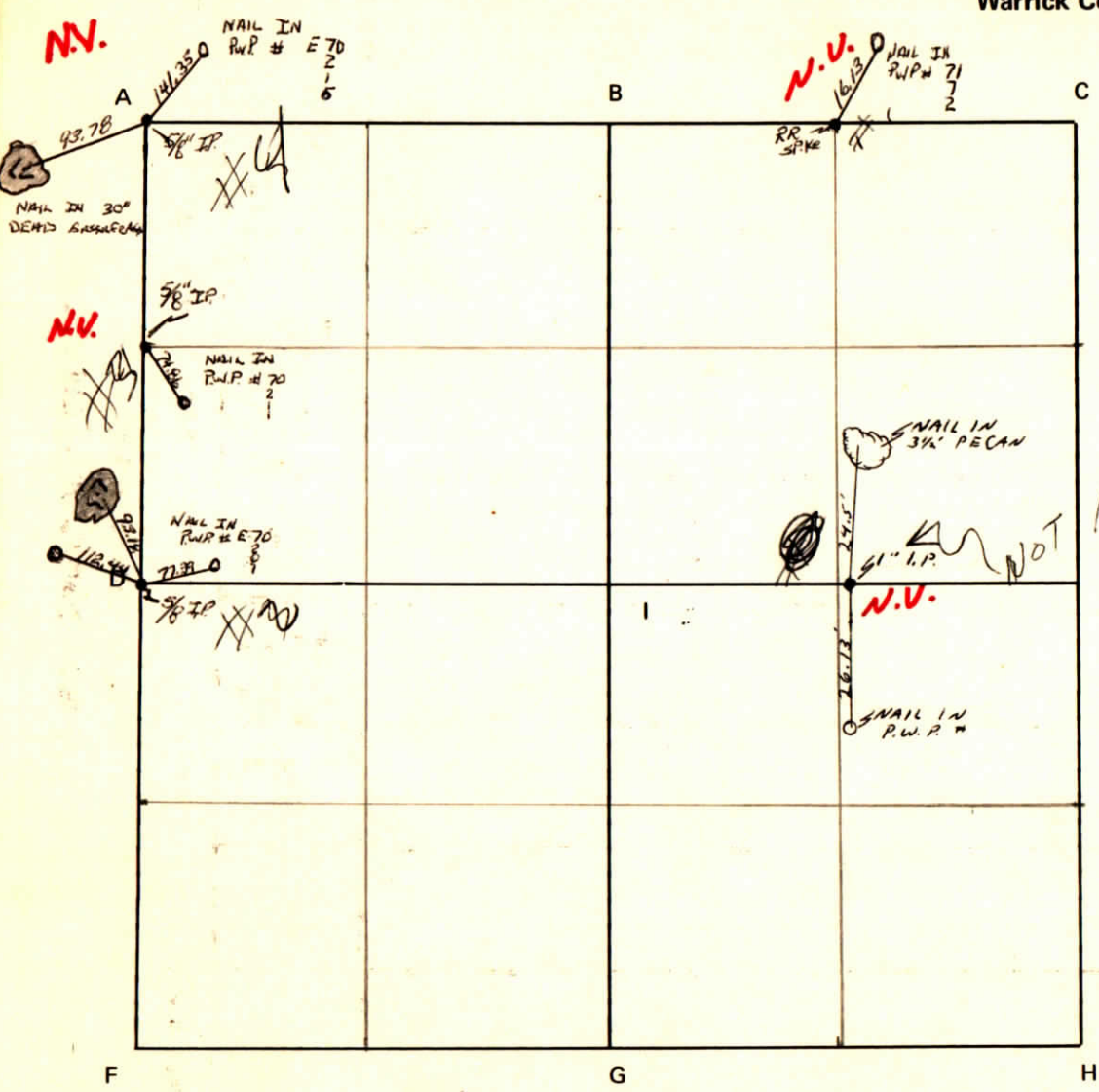
SEC. LINE APPROX. 42'  
WEST OF EAST R/W LINE

70' R/W EACH SIDE OF §  
SEC. COR. APPROX 25' OFF §

CORNER CODE SYSTEM  
Warrick County

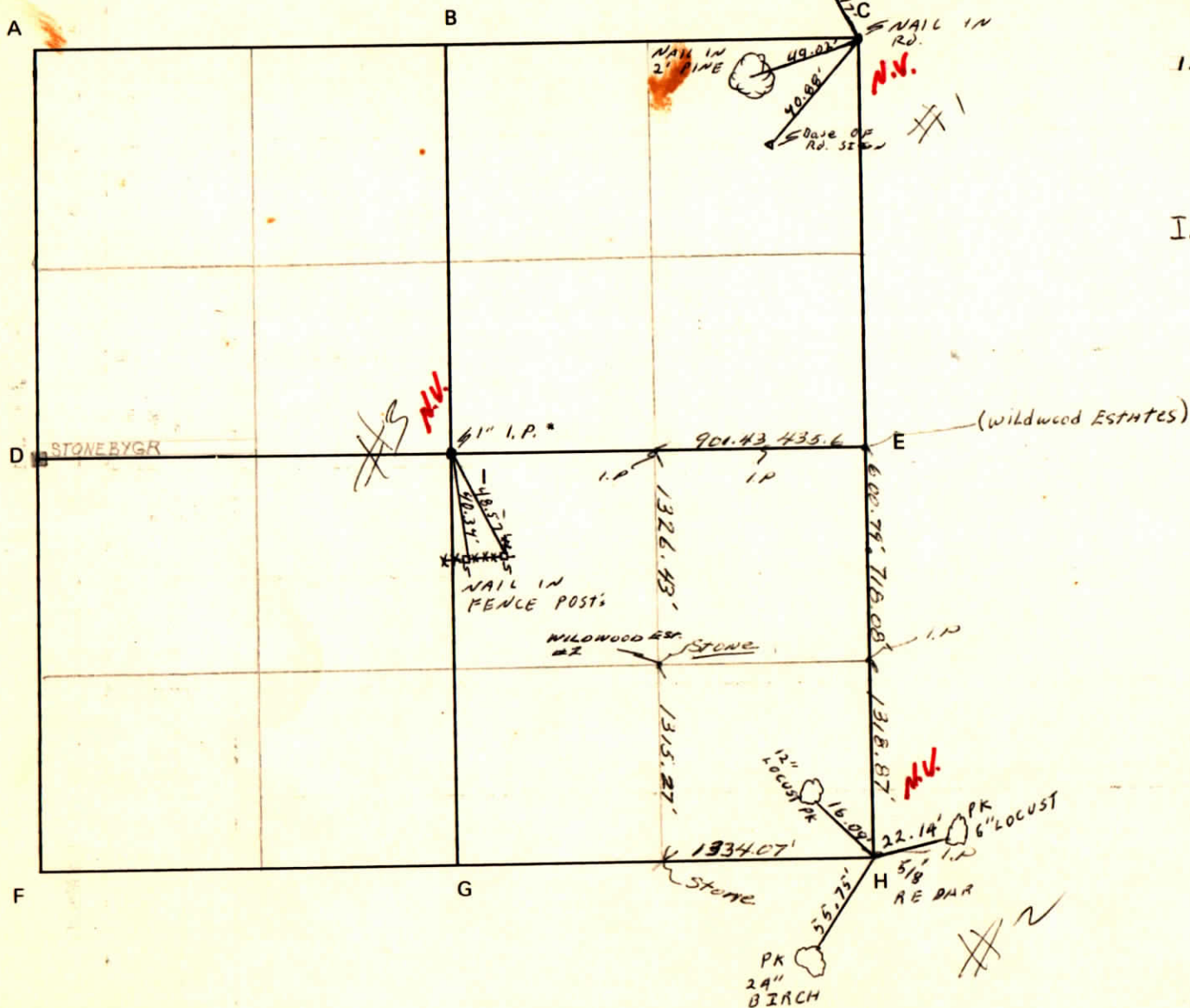
NOTES

ACORNER



**CORNER CODE SYSTEM**

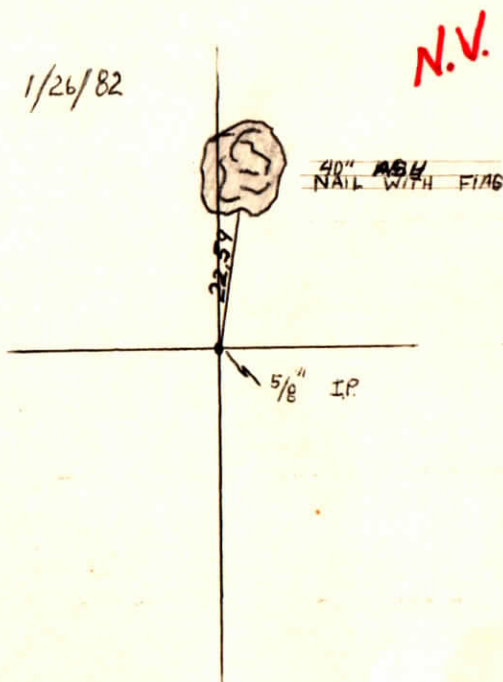
Warrick County



**\* NOTES**

1. I.P. IN CENTER SECTION IS LYING ON ITS SIDE

I. 1/26/82



N.V.

# RECORD OF SECTION CORNERS

Warrick County

Section 34 Township 6 South Range 8 West 2nd Principle Meridian

| Date | Cor | Description of |           | Distance from Corner | Azimuth from Corner (North Assumed) | Cond | Check By | Remarks    |
|------|-----|----------------|-----------|----------------------|-------------------------------------|------|----------|------------|
|      |     | Monument       | Reference |                      |                                     |      |          |            |
|      | A   |                |           |                      |                                     |      |          |            |
|      | B   |                |           |                      |                                     |      |          |            |
|      | C   |                |           |                      |                                     |      |          |            |
|      | D   |                |           |                      |                                     |      |          |            |
|      | E   |                |           |                      |                                     |      |          |            |
|      | F   |                |           |                      |                                     |      |          |            |
|      | G   |                |           |                      |                                     |      |          |            |
|      | H   | 5/8" REBAR     |           |                      |                                     |      |          | ⊕ ROAD BED |
|      | I   |                |           |                      |                                     |      |          |            |

CORNER RECORD  
WARRICK COUNTY



DESCRIPTION:

NE CORNER NW<sup>1</sup>/<sub>4</sub> NW<sup>1</sup>/<sub>4</sub>

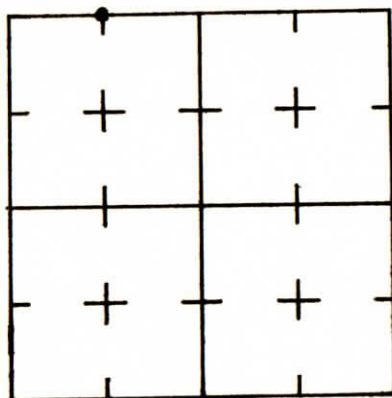
SECTION 34, T. 6 S. R. 8 W.

2<sup>nd</sup> PRINCIPAL MERIDIAN

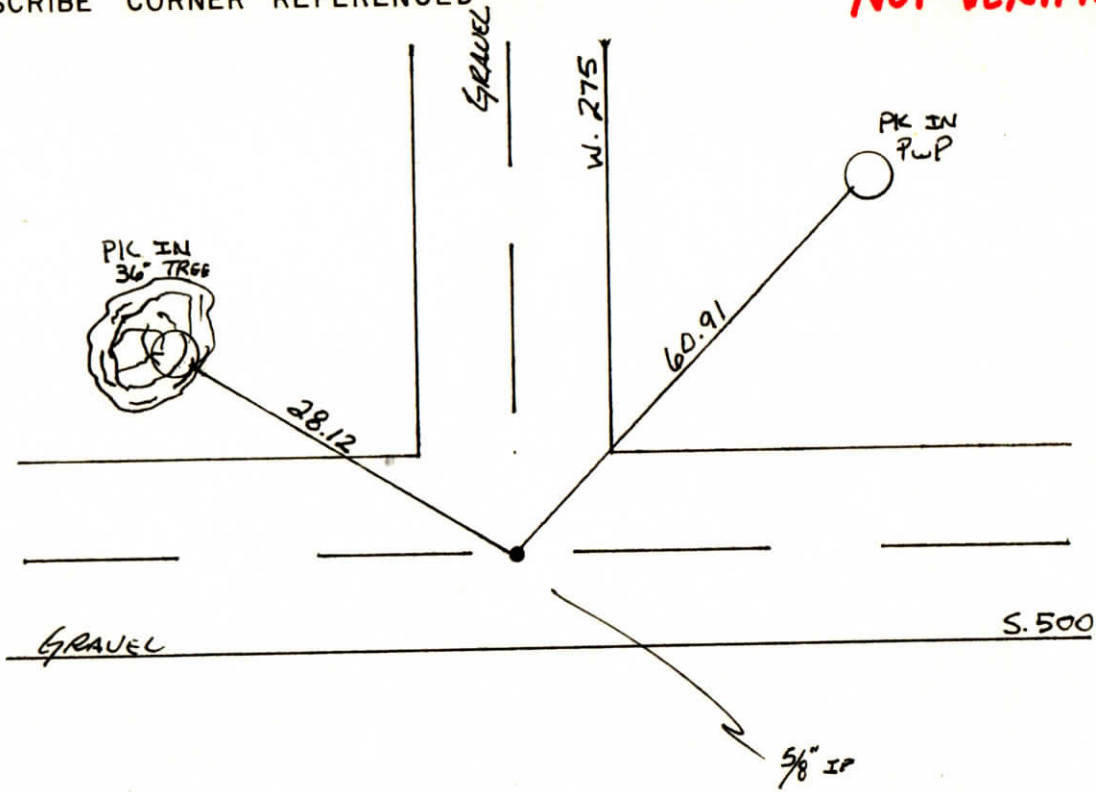
WARRICK COUNTY SURVEYOR  
MICHAEL F. FELDBUSCH, L.S.

**NOT VERIFIED**

INDICATE CORNER REFERENCED



DESCRIBE CORNER REFERENCED



STATE PLANE COORDINATE DATA

INDIANA ZONE: WEST

X \_\_\_\_\_

Y \_\_\_\_\_

ESTABLISHED BY:

\_\_\_\_\_

APPROVED BY

DATE

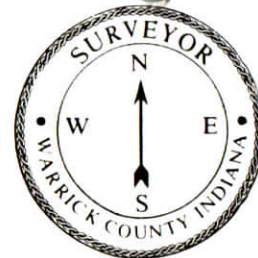
REFERENCED BY

*Hay Beck*

DATE

4-26-84

CORNER RECORD  
WARRICK COUNTY



DESCRIPTION:

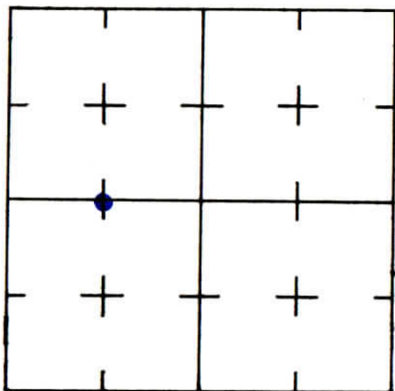
NW CORNER NE 1/4 SW 1/4

SECTION 35, T. 6 S. R. 8 W.

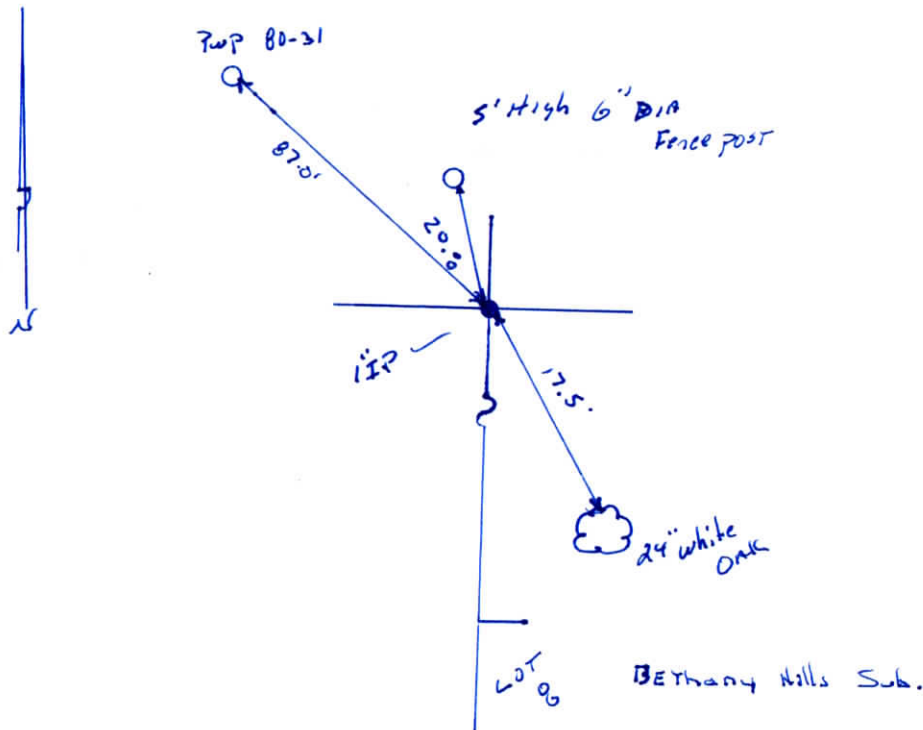
2<sup>nd</sup> PRINCIPLE MERIDIAN

WARRICK COUNTY SURVEYOR  
KARAN HARGRAVE-BARNHILL

INDICATE CORNER REFERENCED



DESCRIBE CORNER REFERENCED



STATE PLANE COORDINATE DATA

INDIANA ZONE: WEST

X \_\_\_\_\_

Y \_\_\_\_\_

ESTABLISHED BY:

APPROVED BY

DATE

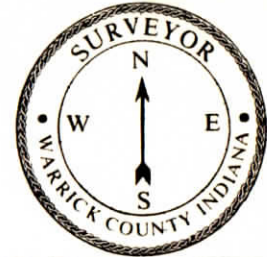
REFERENCED BY:

DATE

*E/mo Dockery*

*Dec 10 91*

CORNER RECORD  
WARRICK COUNTY



DESCRIPTION:

NE CORNER NE 1/4 SW 1/4

SECTION 35, T. 6 S. R. 8 W.

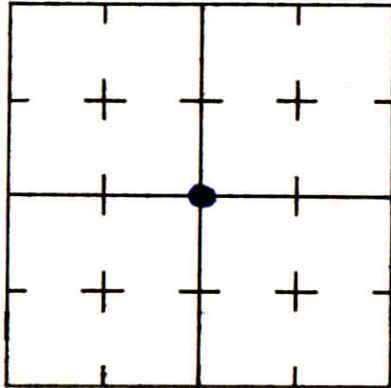
2<sup>nd</sup> PRINCIPLE MERIDIAN

Bethany Hills Sub # 470

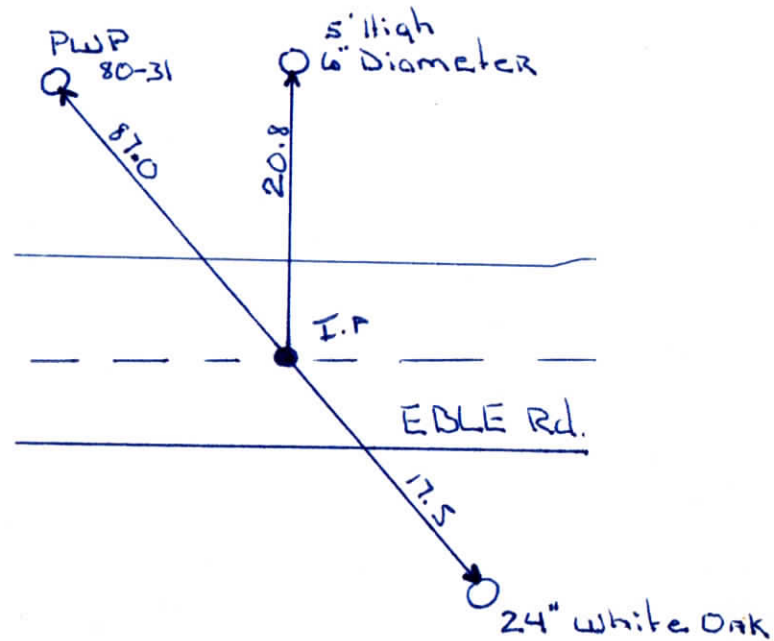
WARRICK COUNTY SURVEYOR

MICHAEL IRVIN

INDICATE CORNER REFERENCED



DESCRIBE CORNER REFERENCED



STATE PLANE COORDINATE DATA

INDIANA ZONE: WEST

X \_\_\_\_\_

Y \_\_\_\_\_

ESTABLISHED BY:

\_\_\_\_\_

APPROVED BY

DATE

REFERENCED BY:

DATE

FRANK Jones

Dec 12, 1990

Section 35

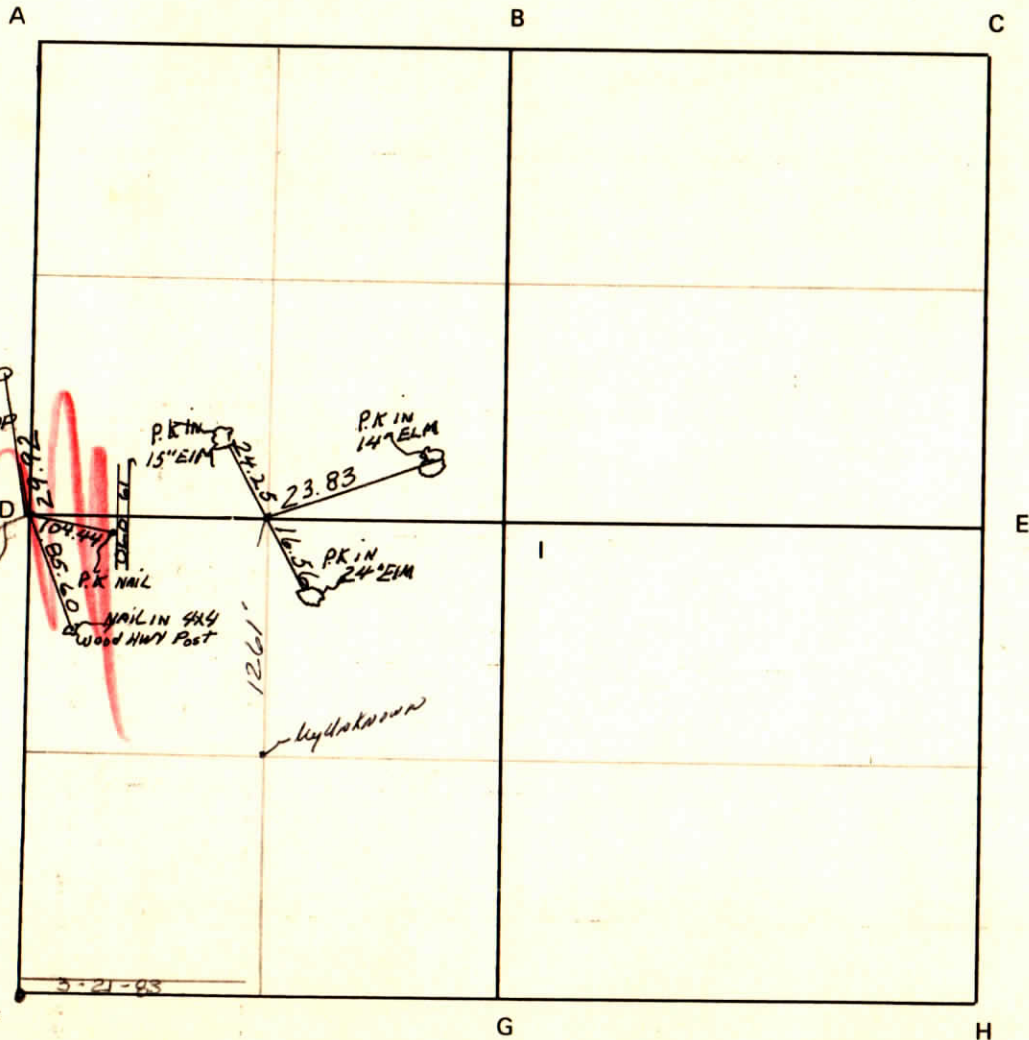
Township 6 South

Range 8 West

2nd P.M.

CORNER CODE SYSTEM  
Warrick County

NOTES





# RECORD OF SECTION CORNERS

Warrick County

Section 35 Township 6 South Range 8 West 2nd Principle Meridian

| Date    | Cor | Description of |  | Distance from Corner | Azimuth from Corner (North Assumed) | Cond | Check By | Remarks                                   |
|---------|-----|----------------|--|----------------------|-------------------------------------|------|----------|---|
|         |     | Monument       | Reference                              |                      |                                     |      |          |   |
| 3/12/73 | A   | iron pin       | pk in 15"elm                           | 24.25                |                                     |      |          | Sam Biggerstaff<br>NE cor. NW1/4<br>SW1/4 |
|         |     |                | pk in 14"elm                           | 23.83                |                                     |      |          |   |
|         | B   |                | PK in 24"elm                           | 16.56                |                                     |      |          |   |
| /12/73  | C   |                |  |                      |                                     |      |          |   |
|         | D   | iron pin       | 1. tack in pwp#<br>A-121212            | 29.92                |                                     |      |          | Sam Biggerstaff                           |
|         |     |                | 2. pk in old<br>S.R. 6'                | 104.44               |                                     |      |          |   |
|         | E   |                | 3. Nail in 4x4<br>WOOD HIGHWAY<br>POST | 85.60                |                                     |      |          |   |
| F       |     |                |  |                      |                                     |      |          |   |
|         | G   |                |  |                      |                                     |      |          |   |
|         | H   |                |  |                      |                                     |      |          |   |
|         | I   |                |  |                      |                                     |      |          |   |

CORNER RECORD  
WARRICK COUNTY



DESCRIPTION:

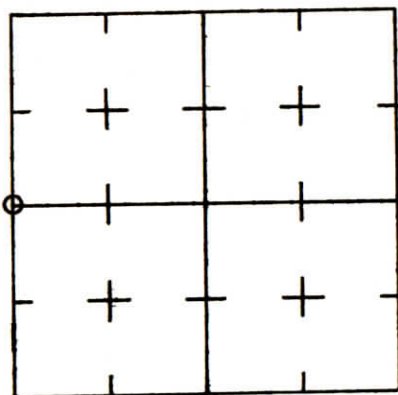
NW CORNER  $W\frac{1}{2}$   $SW\frac{1}{4}$

SECTION 35, T. 6 S. R. 8 W.

2<sup>nd</sup> PRINCIPLE MERIDIAN

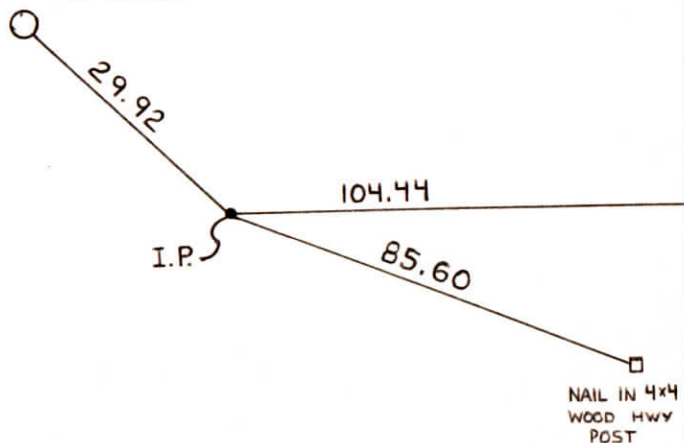
WARRICK COUNTY SURVEYOR  
MICHAEL IRVIN

INDICATE CORNER REFERENCED



DESCRIBE CORNER REFERENCED

TACK IN P.W.P.  
# A-121212



YANKEETOWN RD. (W 200)

STATE PLANE COORDINATE DATA

INDIANA ZONE: WEST

X \_\_\_\_\_

Y \_\_\_\_\_

ESTABLISHED BY:

\_\_\_\_\_

APPROVED BY NOT VERIFIED

DATE  
3-12-73

REFERENCED BY:  
SAM BIGGERSTAFF

DATE

(NW CORNER -  $W\frac{1}{2}$  -  $SW\frac{1}{4}$  SEC. 35-6-8) COR ID 000003  
2

NE CORNER -  $E\frac{1}{2}$  -  $SE\frac{1}{4}$  SEC. 34-6-8

TYPE OF MONUMENT - I.P.

DATE - 3-12-73

REFERENCED BY - SAM BIGGERSTAFF



CORNER RECORD  
WARRICK COUNTY

DESCRIPTION:

NW CORNER E<sup>1</sup>/<sub>2</sub> NE<sup>1</sup>/<sub>4</sub>

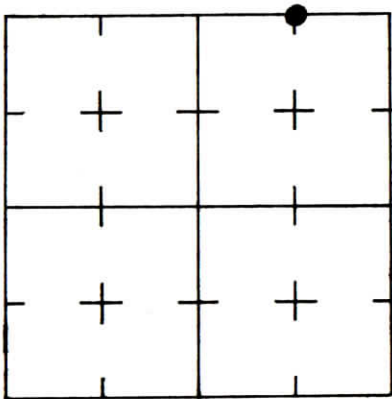
SECTION 35, T. 6 S. R. 8 W.

2<sup>nd</sup> PRINCIPLE MERIDIAN

WARRICK COUNTY SURVEYOR  
KARAN HARGRAVE-BARNHILL

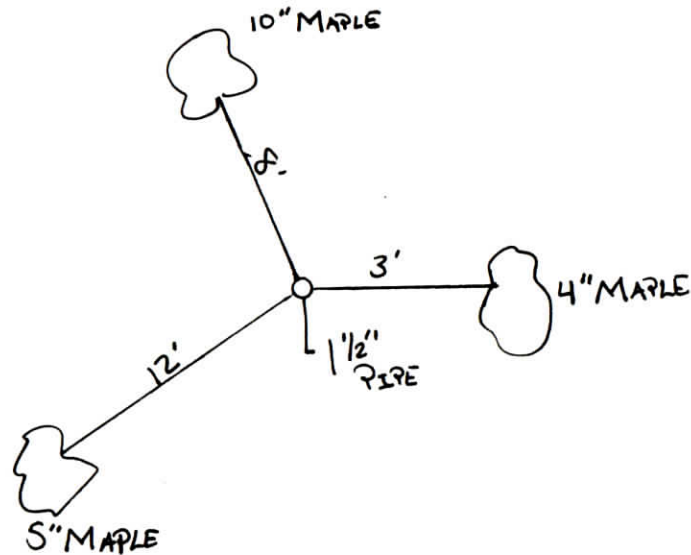


INDICATE CORNER REFERENCED



DESCRIBE CORNER REFERENCED

PICHOLING PLACE



STATE PLANE COORDINATE DATA

INDIANA ZONE: WEST

X \_\_\_\_\_

Y \_\_\_\_\_

ESTABLISHED BY:  
\_\_\_\_\_

APPROVED BY

DATE

REFERENCED BY:

DATE

WILLIAM Y. BIVINS

5-15-97

CORNER RECORD  
WARRICK COUNTY



DESCRIPTION:

SE CORNER S<sup>1</sup>/<sub>2</sub>

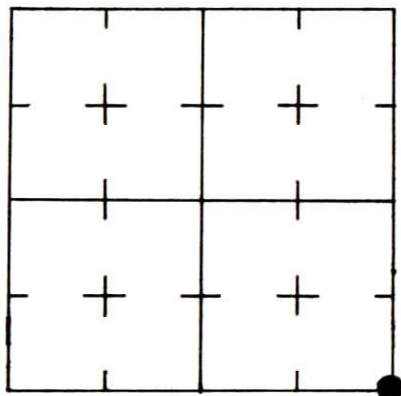
SECTION 36, T. 6 S. R. 8 W.

2<sup>nd</sup> PRINCIPLE MERIDIAN

WARRICK COUNTY SURVEYOR

KARAN HARGRAVE-BARNHILL

INDICATE CORNER REFERENCED



DESCRIBE CORNER REFERENCED

*MEECE - FODGE SUB.*

STATE PLANE COORDINATE DATA

INDIANA ZONE: WEST

X \_\_\_\_\_

Y \_\_\_\_\_

ESTABLISHED BY:

APPROVED BY

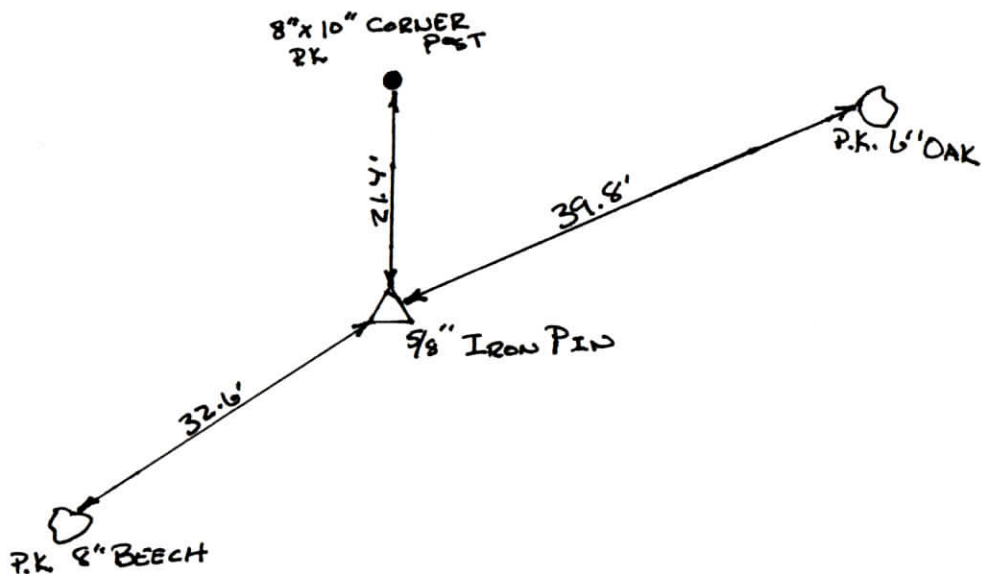
DATE

REFERENCED BY:

DATE

*WILLIAM Y. BIVINS*

*9-12-94*



CORNER RECORD  
WARRICK COUNTY



DESCRIPTION:

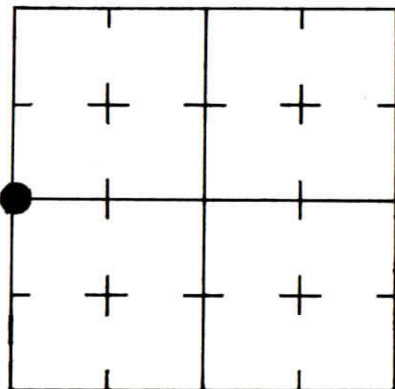
SW CORNER 1/2 1/4

SECTION 36, T. 6 S. R. 8 W.

2<sup>nd</sup> PRINCIPLE MERIDIAN

WARRICK COUNTY SURVEYOR  
KARAN HARGRAVE-BARNHILL

INDICATE CORNER REFERENCED



DESCRIBE CORNER REFERENCED

LOST TRAILS SUB.  
PART 2

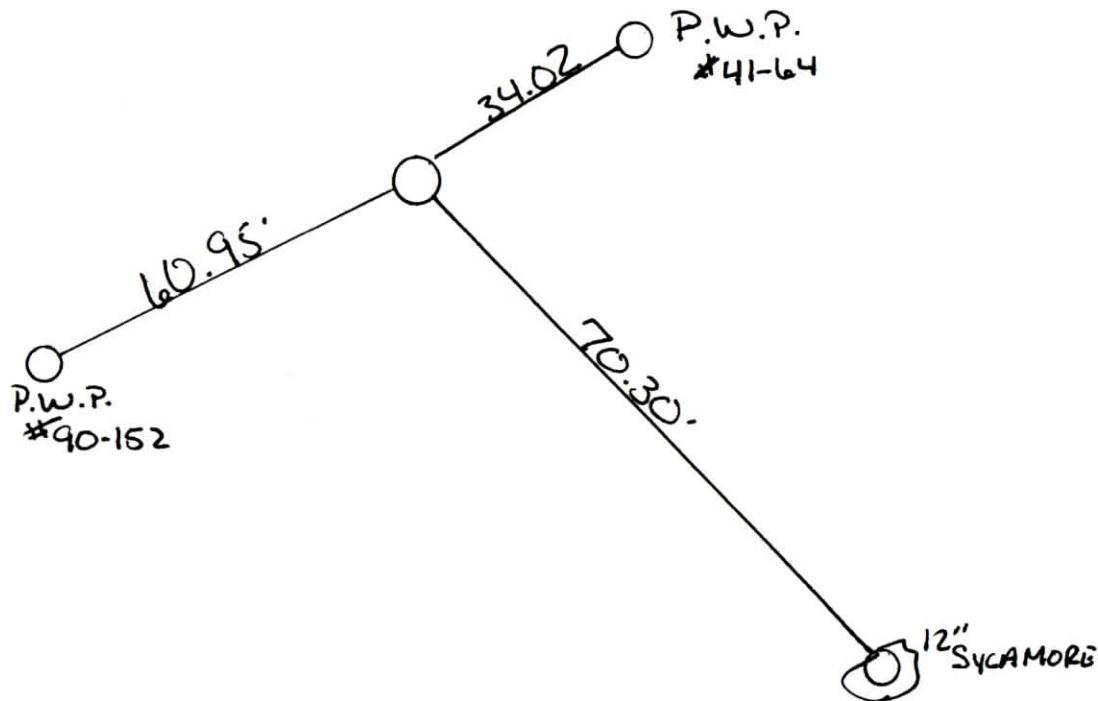
STATE PLANE COORDINATE DATA

INDIANA ZONE: WEST

X \_\_\_\_\_

Y \_\_\_\_\_

ESTABLISHED BY:  
\_\_\_\_\_



APPROVED BY

DATE

REFERENCED BY:

DATE

ELMO D. DOCKERY

4-12-95

CORNER RECORD  
WARRICK COUNTY



DESCRIPTION:

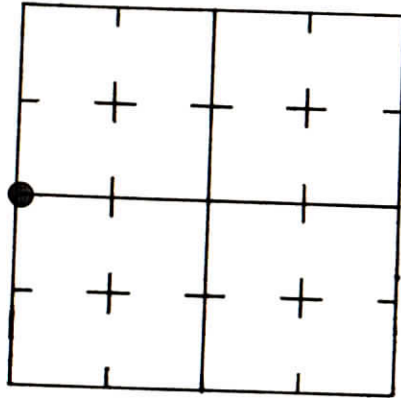
SW CORNER W 1/2 NW 1/4

SECTION 36, T. 6 S. R. 8 W.

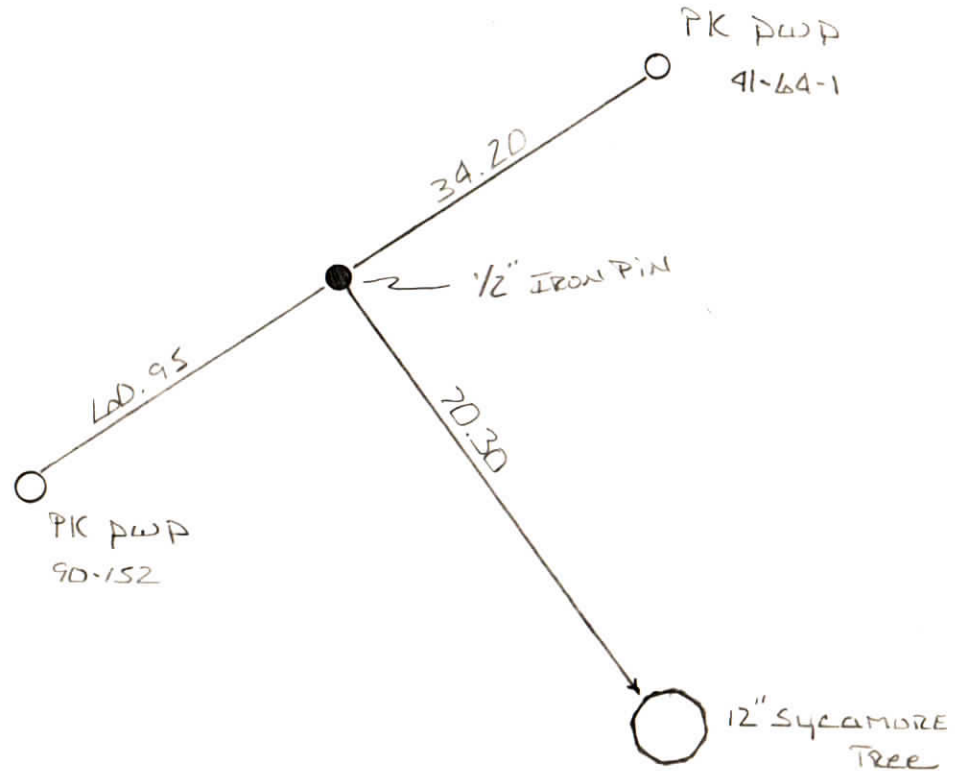
2<sup>nd</sup> PRINCIPLE MERIDIAN

WARRICK COUNTY SURVEYOR  
MICHAEL IRVIN

INDICATE CORNER REFERENCED



DESCRIBE CORNER REFERENCED



STATE PLANE COORDINATE DATA

INDIANA ZONE: WEST

X \_\_\_\_\_

Y \_\_\_\_\_

ESTABLISHED BY:  
\_\_\_\_\_

APPROVED BY

DATE

REFERENCED BY:

DATE

*Elmer Dockett*

MAY 12 1993

CORNER RECORD  
WARRICK COUNTY



DESCRIPTION:

SW CORNER W 1/2 NW 1/4

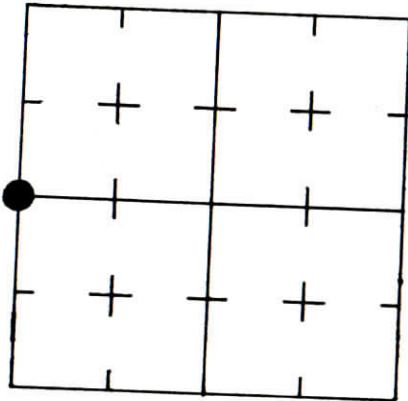
SECTION 36, T. 6 S.

R. 8 W.

2<sup>nd</sup> PRINCIPLE MERIDIAN

WARRICK COUNTY SURVEYOR  
KARAN HARGRAVE-BARNHILL

INDICATE CORNER REFERENCED



DESCRIBE CORNER REFERENCED

LOST TRAILS SUB

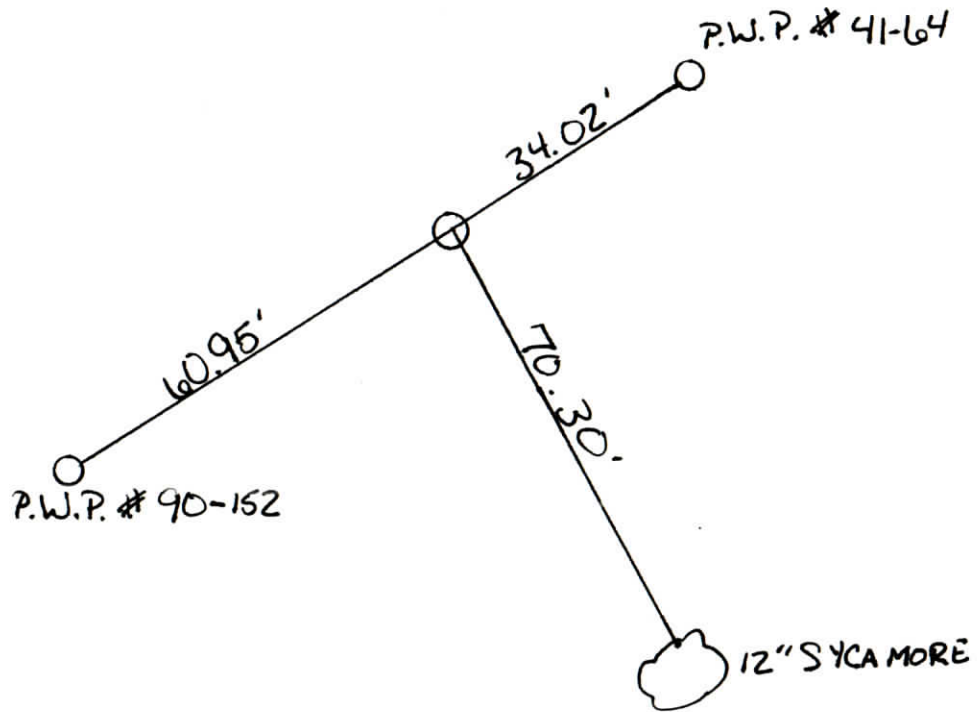
STATE PLANE COORDINATE DATA

INDIANA ZONE: WEST

X \_\_\_\_\_

Y \_\_\_\_\_

ESTABLISHED BY:  
\_\_\_\_\_



APPROVED BY \_\_\_\_\_

DATE \_\_\_\_\_

REFERENCED BY:

ELMO D. DOCKERY

DATE

4-12-90



CORNER RECORD  
WARRICK COUNTY



DESCRIPTION:

SW CORNER 1/2 NW 1/4

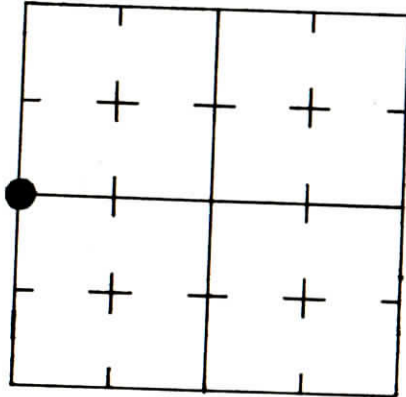
SECTION 36, T. 6 S.

R. 8 W.

2<sup>nd</sup> PRINCIPLE MERIDIAN

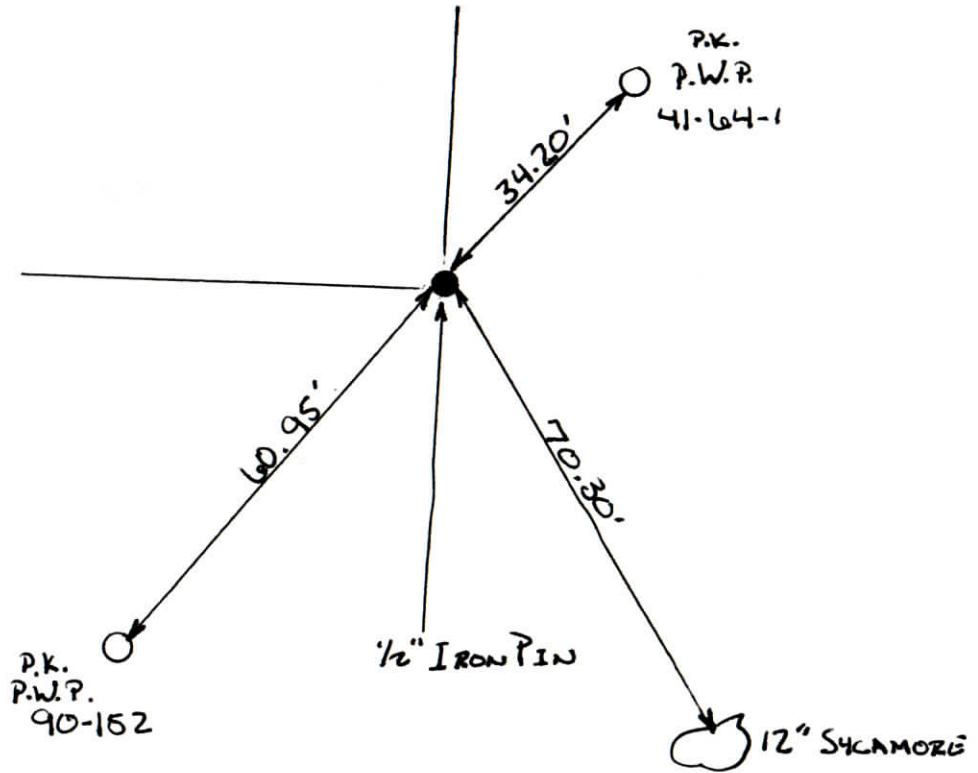
WARRICK COUNTY SURVEYOR  
KARAN HARGRAVE-BARNHILL

INDICATE CORNER REFERENCED



DESCRIBE CORNER REFERENCED

LOST TRAIL SUB.



STATE PLANE COORDINATE DATA

INDIANA ZONE: WEST

X \_\_\_\_\_

Y \_\_\_\_\_

ESTABLISHED BY:

APPROVED BY

DATE

REFERENCED BY:

DATE

ELMO D. DOCKERY

12-13-92